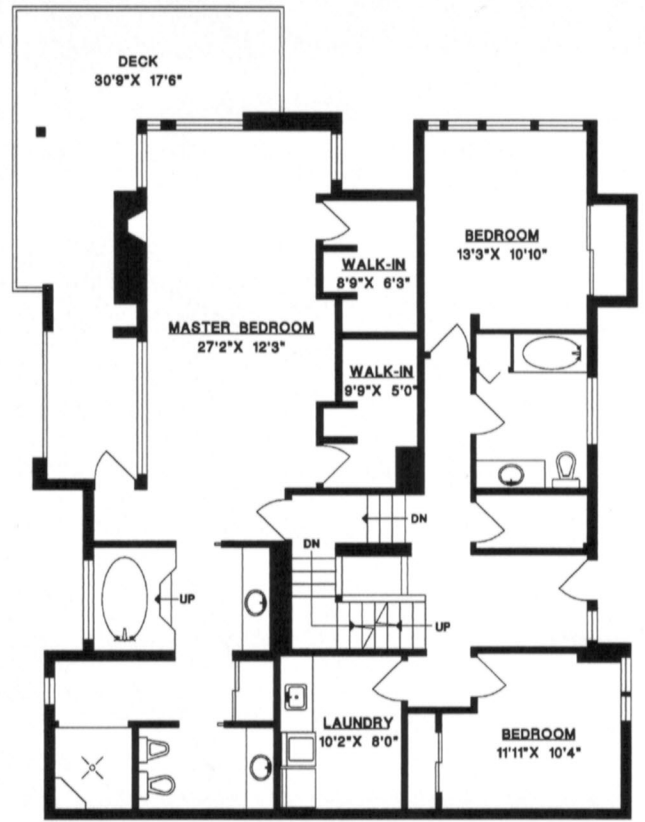
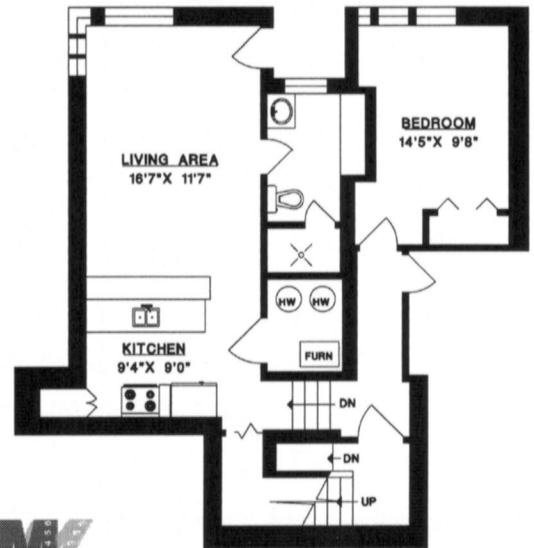


UPPER FLOOR



MAIN FLOOR



LOWER FLOOR

4255 ST. PAULS AVENUE
NORTH VANCOUVER

MAIN FLOOR	1,545 SQ.FT.
UPPER FLOOR	1,365 SQ.FT.
LOWER FLOOR	874 SQ.FT.
TOTAL	3,784 SQ.FT.
GARAGE	425 SQ.FT.
DECKS	808 SQ.FT.

